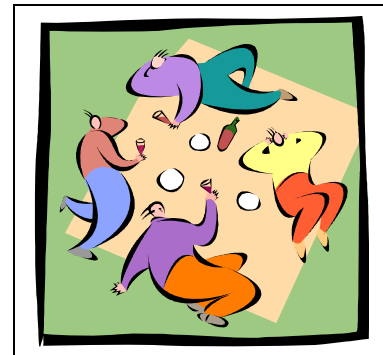


# BALTIMORE GREEN FORUM

*a monthly environmental education and discussion forum*



**Sunday June 24 , 2012**  
4:00-6:30 PM  
Maryland Presbyterian Church  
1105 Providence Road,  
Towson, MD 21286



## ANNUAL POTLUCK PICNIC

We will be celebrating a successful year of Baltimore Green Forum gatherings. Here is a great chance to hang out with folks you have begun to know throughout the year. The BGF Planning Committee will also ask for your input about our fall forums

- **bring some food to share.** We encourage "local" foods, from within 50 miles\* . Please write on a small paper whether it is meat, dairy, vegetarian, or vegan
- **please also bring your own plate, utensils, and cup** as no throw-aways will be provided. We hope to make this a "zero-waste" gathering.
- **please bring a beach chair or blanket,** if you want to sit outside,

**RSVPs not required.**

### **\*50-MILE MEAL**

The BGF Planning Committee encourages you to take positive action and make this picnic a local organic food event! If you are up to the challenge, you can bring a dish with organic ingredients that have been harvested within 50 miles of your home. This act disengages ourselves from the extensive fossil fuel-dependent food transport system, while supporting the efforts of local organic farmers, and promoting our physical health as well.

**For more information see:**

[http://en.wikipedia.org/wiki/Local\\_food](http://en.wikipedia.org/wiki/Local_food) and <http://www.slowfood.com/>

*The Baltimore Green Forum is a monthly environmental and discussion forum held usually on the last Sunday of each month. It is open to the public and is free of charge, but donations to Maryland Presbyterian Church are greatly appreciated. For questions, to co-sponsor, or to RSVP, contact [baltimoregreenforum@gmail.com](mailto:baltimoregreenforum@gmail.com) or 301-345-2234.*

***The Baltimore Green Forum is Co-Sponsored by:***

[Simplicity Matters Earth Institute](#) ~ [Transition Baltimore](#) ~ [Baltimore Climate Action Network](#)  
[Baltimore Jewish Environmental Network](#) ~ [Parks & People](#) ~ [Network of Spiritual Progressives in Maryland](#)  
[MD League of Conservation Voters Education Fund, Inc](#) ~ [Greater Baltimore Group of the Sierra Club](#) ~ [Heathcote Community Creation Care Group of the Presbytery of Baltimore](#) ~ [Chesapeake Sustainable Business Alliance](#)

**HELP US PUBLICIZE THIS EVENT!**

**Download and post a [flyer](#) (PDF) in your workplace or neighborhood!**

Go to <http://www.baltimoregreenforum.org>